

INSTALLATION GUIDE

For model:
RDO12A



WARNING

Please read the manual carefully before installation and use. The installation of your new door opener must be carried out by a technically qualified or licensed person. Attempting to install or repair the door opener without suitable technical qualification may result in severe personal injury, death and / or property damage.

GARAGE DOOR OPENER RDO12A

FOR ROLLER GARAGE DOORS | INSTALLATION & USER GUIDE

CONTENTS

Important safety recommendations..... 3

Preinstallation note..... 4

Installation instructions..... 5

Control box set up..... 6

Manual disengagement..... 9

Technical specifications..... 9

Common trouble shooting..... 10

IMPORTANT! PLEASE READ THESE INSTRUCTIONS CAREFULLY PRIOR TO INSTALLATION OF THE ROLLER DOOR MOTOR.

This automatic opener has been designed to provide years of trouble free use. The opener will perform efficiently only if it is installed and operated correctly.

READ THESE IMPORTANT SAFETY RULES FIRST.

Keep garage door balanced. Sticking or binding doors must be repaired. Garage doors, door springs, brackets and their hardware are under extreme tension and can cause serious personal injury. **Do not attempt adjustment.** Call professional garage door installers.

Do not wear rings, watches or loose clothing while installing or servicing a garage door operator.

Installation and wiring must be in compliance with your local building and electrical codes.

The safety reverse system test is very important. Your garage door must reverse on a contact with a

5 to 10cm high object on the floor. Failure to properly adjust the operator may result in serious personal injury from a closing garage door. Repeat the test once a month and make any needed adjustments. (See Sensitivity adjustment).

ET-12A operator has an electronic obstruction system that provides safe and reliable operation. It is however a legal requirement in some countries to also install a Photo-electric sensor across the door way. Please check this requirement with your local distributor.

Do not use the force adjustments to compensate for binding or sticking garage doors. Excessive force will interfere with the proper operation of the Safety Reverse System or damage the garage door.

This unit should not be installed in a damp or wet space.

Disengage all existing garage door locks to avoid damage to garage door.

Install the lighted door Control Box (or any additional Push Buttons) in a location where the garage door is visible, but out of the reach of children. Do not allow children to operate push button(s) or remote control(s). Serious personal injury from a closing garage door may result from misuse of the operator.

CAUTION: Activate operator only when the door is in full view, free of obstructions and operator is properly adjusted. No one should enter or leave the garage while the door is in motion. Do not allow children to play near the door.

Disconnect electric power to the garage door operator before making repairs or removing covers.

IMPORTANT: Label a caution mark to the rear of the garage door as a reminder of safe operating procedures.

Pre-installation Notes

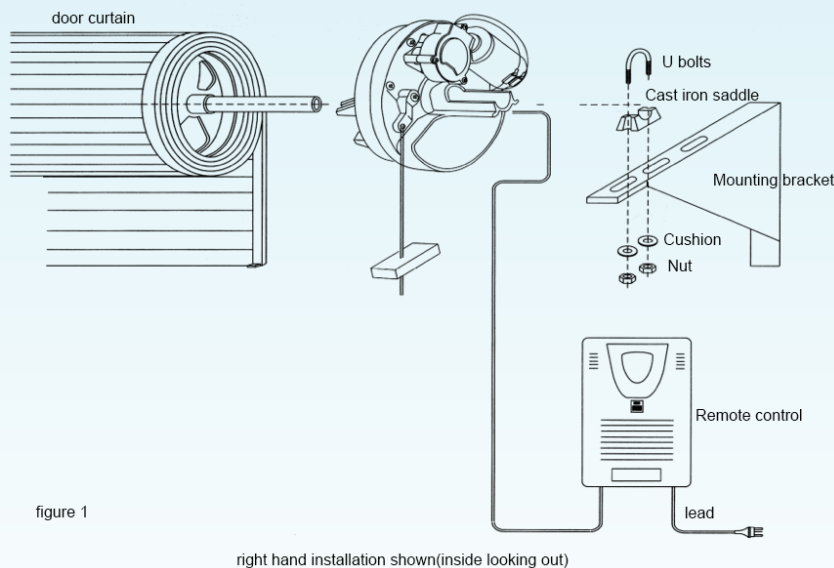


figure 1

right hand installation shown (inside looking out)

Right hand installation shown (inside garage looking out)Fig1

Check that there is sufficient side clearance to fit the operator unit. It may be fitted to either the right or left hand side.

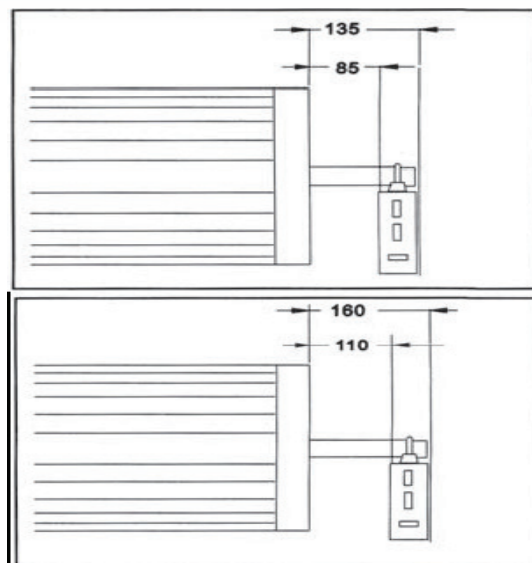
(1) Minimum side clearance:

The minimum side clearance between door curtain and the inside edge of mounting bracket is 85mm; The minimum side clearance between door curtain and the outside edge of mounting bracket is 135mm.

(2) Recommended side clearance

The recommended side clearance between door curtain and the inside edge of mounting bracket is 110mm;

The recommended side clearance between door curtain and the outside edge of mounting bracket is 160mm.



If the operator is being fitted at the same time as the new door installation, read these instructions in conjunction with the roller door installation instructions.

If the operator is being retro-fitted, make sure the door operates smoothly and is properly balanced.

N.B.: SPECIAL CARE SHOULD BE TAKEN IF RE-TENSIONING OF THE DOOR IS REQUIRED.

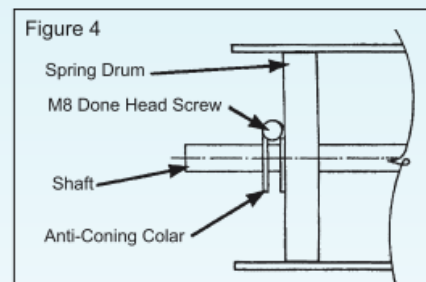
At no stage should you loosen both "U" bolts if door is under tension.

IF THERE ARE ANY PROBLEMS PLEASE CONTACT YOUR LOCAL SUPPLIER OF THIS OPERATOR.

Installation Instruction

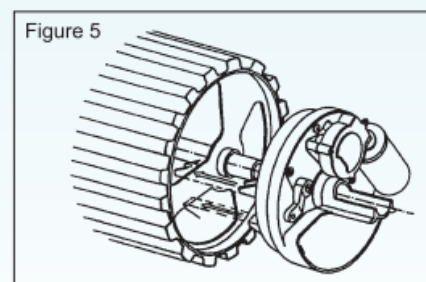
STEP 1

Whilst the door roll is on the floor, rotate shaft backwards and forwards by hand and then release. This action will allow the roll to centralize itself on the shaft.
(New installation only).



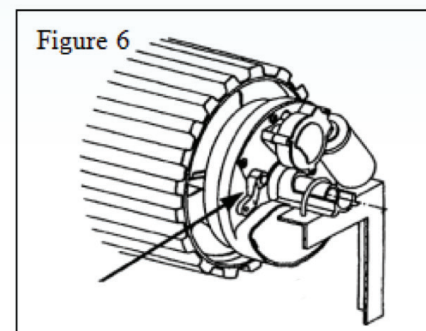
STEP 2

Fit anti-coning collar TIGHT TO DRUM at opposite end of curtain to the motor using M8 Dome Head Screw and M8 Nyloc Nut as required. Figure 4.



STEP 3

Slide drive unit onto shaft as shown Figure 5. Ensuring drive lugs engage fully with the narrowest spoke on drum wheel.



N.B.: Right-hand installation shown (inside looking out)

Lift door onto mounting brackets (ensuring curtain roll is correct way round) centralize curtain roll with opening. Refer to door installation instructions. (New installations only).

Ensure motor assembly is fully engaged with drum wheel spokes. Clamp shaft to mounting brackets using "U" Bolts supplied. (Use "U" bolt in opener pack for MOTOR end). See Figure 6.

Disengage the motor drive by pulling the manual release lever downwards. See Figure 6.

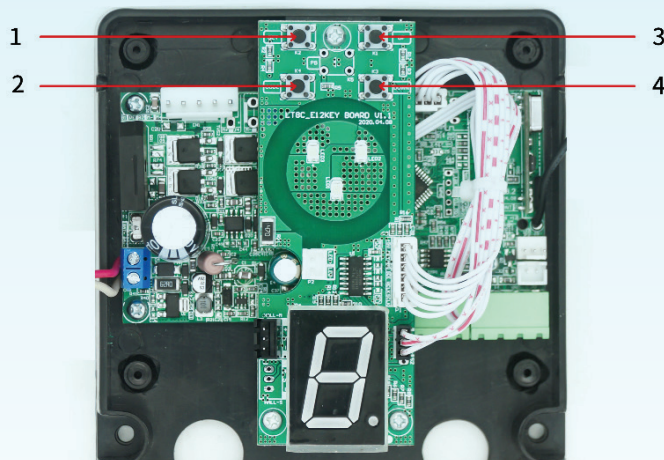
Tension door and complete door installation as per Door Installation Instructions. Ensure door is correctly balanced and is not binding or sticking within vertical tracks.

Ensure locking bars (if fitted) are moved to the retracted (unlocked) position and keys removed from the lock.

Mount control Unit approximately 1.6m from the floor out of the reach of children. Use No. 4x1" self-tapping screws and raw l plugs. Ensure aerial is clear of all steel supports and coiled electrical leads. Fit plug from motor unit into bottom of Control Box.

Connect the control unit power cord to an adjacent socket. Ensure that the socket is properly earthed.

1. Control box set up (Remove cover on front of control box first.)

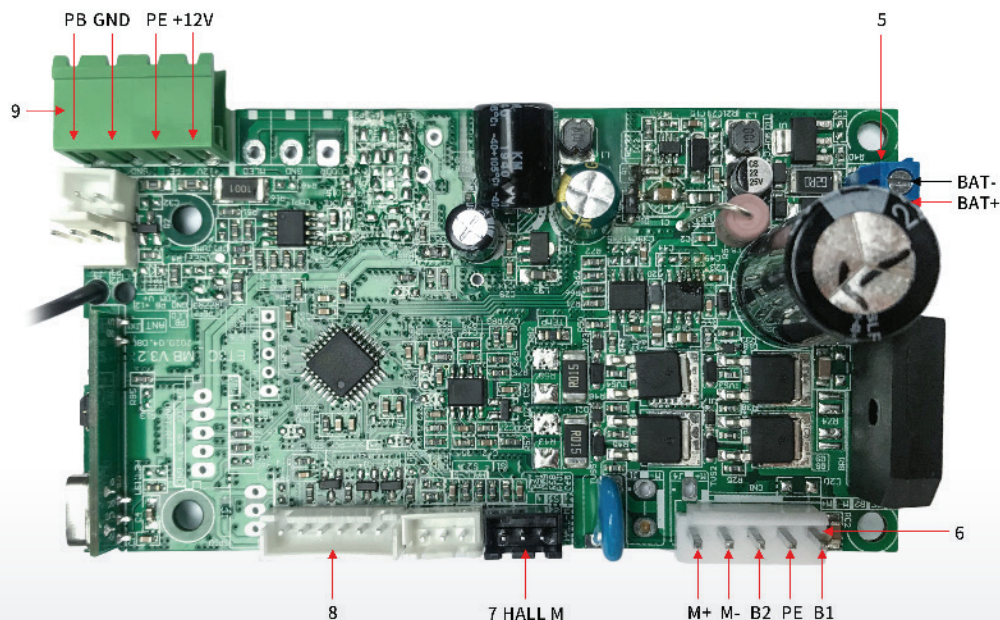


Operation Controls:

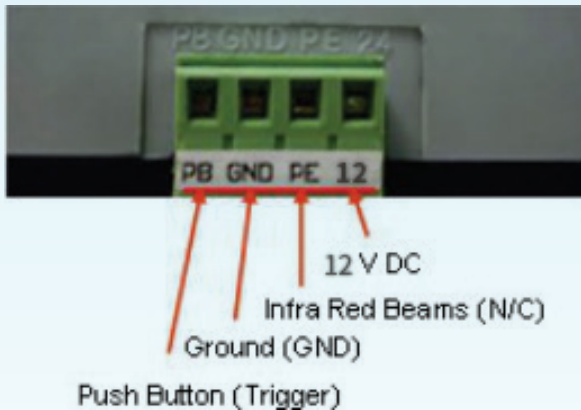
- 1 SET Button - Confirm set and Reversing sensitivity
- 2 CODE Button - Transmitter code set.
- 3 UP Button - Limit mode set.
- 4 DOWN Button - Limit mode set

Circuit Board Connections.

- 5 Coupling for connecting the backup battery.
- 6 Coupling for connecting the motor and transformer.
- 7 Terminal connector to the control board.
- 8 Terminal connector to the control board.
- 9 Terminal connections for photo beam and push button.



2. Terminals and Connections.



- 1) GND & PB = **Push Button** terminals. Step by step command input (open, stop, close) same as the step by step button on the transmitter.
- 2) 12V & GND & PE = **Photo beam** terminals.
- 3) 12V & GND & PB = **Plug in receiver** terminals

To safeguard the operator and avoid damaging components while wiring, disconnect the unit from all power when working on it.

Remember that there are specific strict standards that must be complied with in regards to both the safety of the electrical systems and the automatic doors.

Only qualified, trained personnel may carry out the installation and subsequent maintenance. Whoever installs and uses the ET12A roller door opener will be held responsible for any damage caused.

3. Right hand and left hand installation

Please note: The operator is designed to operate on the right side of the door by default.

To reverse the drive for left hand side installation, press and hold the **SET** button until the LED displays 5.

Using the **UP** or **DOWN** buttons select **1** for left installation or **0** for right side installation.

Press **SET** to confirm the setting.

WARNING: This step must be completed prior to setting Open and Close limits and safety reverse force adjustment if utilizing a lift side installation. If utilizing the standard right sided installation, this step can be ignored.

4. Setting Open and Close Limits.

- 4.1) Press and hold **SET** button until the **LED** displays the letter **1**. It turns into opening learn state.
- 4.2) Now press and hold **UP** button, the door must travel to the open position, release the button when the door has reached the desired open position.
- 4.3) If the door has overrun its open position, press the **DOWN** button to move the door downwards. Adjust and fine tune the open position by pressing **UP** and **DOWN**.
- 4.4) Press **SET** to store the open position, the LED will display the letter **2**, it is now ready to set the close position
- 4.5) Press and hold **DOWN**, the door must travel to the close position, release the button when the door has reached the desired close position.
- 4.6) If the door has overrun its close position, press the **UP** button to move the door upwards. Adjust and fine tune the close position by pressing **DOWN** and **UP**.
- 4.7) Press **SET** to store the close position.

The door will then open and close automatically to map the open and close sensitivity force requirements.

4.8) The door is now set for normal operational mode.

IMPORTANT: Safety systems must be checked regularly to ensure that maximum safety is maintained at all times.

5. Safety Reverse Force Adjustments.

The force settings must now be set. (Set force between 1 - 9)

5.1) Press and hold **SET** until the LED displays setting number **3**, release **SET**, the force setting number will appear from **1 – 9**. It is now in force adjustment mode.

5.2) Press **UP** to increase the force by one degree and **DOWN** to decrease the force by one degree. Maximum degree is **9** and the minimum degree is **1**.

5.3) Press **SET** to store your setting.

5.4) If the door meets an obstruction it will stop and rebounds to the top.

6. Photo beam setting (OPTIONAL).

Make sure the photo beam has been installed correctly before setting the Photo beam function.

6.1) Press and hold **DOWN** until the LED displays **II**.

6.2) Press **UP** once, the LED displays **H**, the photo beam is available, Press **DOWN**, the LED displays **II** to cancel this function.

6.3) Press **SET** to store your setting.

Notice: Close the photo beam function when you don't use photo beam.

7. Set Auto close setting.

7.1) Press and hold **UP** until the LED displays **0**

7.2) Press **UP** once, the auto close time will increase by **1** minute, the maximum time is **9** minutes.

Press **DOWN** once, the auto close time will decrease by **1** minute. The LED will display the current set value.

7.3) The Auto Close function will be disabled when the setting is **0**.

7.4) Press **SET** to store your setting.

Notice: The auto close is only available when door is at its full open position. When using auto close mode, a photo beam must be fitted correctly and tested for operation at regular intervals.

8. Self Learning Transmitter. (Maximum 20)

8.1) Press **CODE**, the Red dot will light up.

Press and release a button on the transmitter, the Red dot will disappear, press the same button again, the Red dot will flash and then be replaced by a **U** on the LED display.

Transmitter is programmed successfully.

8.2) Repeat step 1 to code a maximum of 20 transmitters onto the ET12 operator.

8.3) To master erase the ET12 receiver, press and hold **CODE**, the LED display dot will flash, keep holding for approximately 8 seconds until the LED display flashes a **C**. Release button. All transmitters are now deleted.

Manual disengagement

Pull manual release lever downwards. (Refer fig 10 below)

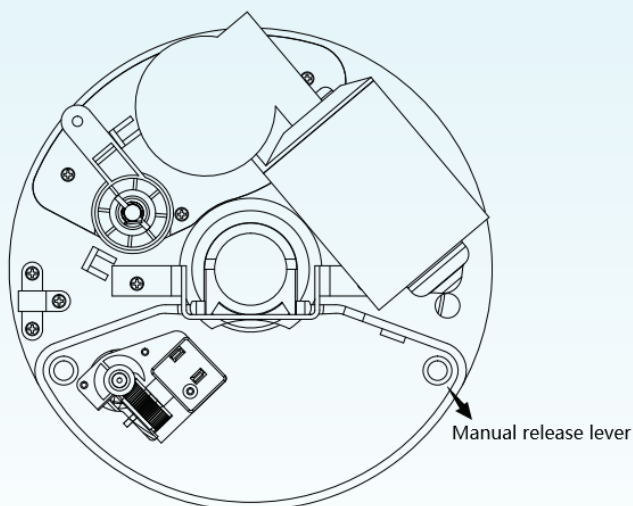


Figure 10

Technical Specifications

| Model | ET12A |
|-------------------------|--------------------------------|
| Power Input: | 220-240 VAC 50/60Hz |
| Motor: | 18 VAC |
| Courtesy light time: | 3 minutes |
| Relative humidity: | <90 % |
| Reception frequency: | 433.92 MHz |
| Transmitter power: | 12V Battery |
| Working temperature: | -20 C – 40 C |
| Open and close force: | 600 N |
| Decoding: | Rolling code |
| Lamp: | LED, 12V DC |
| Operator limits travel: | 6.5 circles of door drum wheel |

COMMON TROUBLE SHOOTING

| Symptom | Possible reason | Solution |
|--|---|---|
| The door will not operate from control box | Power not switch on | Check power is on to control unit (Red LED illuminated) |
| | Mains plug problem | Plug fully engaged on the control box and motor wiring connections properly engaged |
| "beep, beep....." from buzzer, and LED displays "E2" error code | Motor fault | Push the manual release lever up |
| | | Change a new motor |
| | | Change a new rotary encoder |
| "beep, beep....." from buzzer, and LED displays "E6" error code | Door twisted | Fix the door |
| The door does not move, and LED displays "8" error code | Motor is too hot | Wait for 15 minutes, then restart |
| The door does not move and LED displays "9" when self-learning after set UP and DOWN limit | Door is too heavy | Improve the weight balance of the door |
| The door won't reverse when obstructed | The moving force of the motor is set too high | Decrease the safety reverse force |
| The door reverses automatically when closing | The moving force of the motor is set too low | Increase the safety reverse force |

| | | |
|---|--|--|
| | There could be an obstruction under the door | Remove obstruction |
| The door stops automatically when opening | The moving force of the motor is set too low | Increase the safety reverse force |
| The operator can be controlled by O/S/C button but not the remote | The remote light doesn't flash | The battery is loose. Open rear cover and ensure battery is connected. |
| | The receiving antenna is not pulled out | Pull out the receiving antenna |
| | Low battery in remote | Change new battery (12V) |
| The door can only open, cannot close | The photocell function was activated | Close the photocell function |
| The motor rotates but the door doesn't move | Motor put into manual mode | Push the manual release lever up |
| The door closes when pressing 'UP' during limit setting | Left / right installation error | Change the installation direction according to left/right installation setting in the instruction manual |



« SCAN THIS QR CODE TO FIND A STRATCO NEAR YOU

1300 155 155
stratco.com.au

All brands and logos/images accompanied by ® or ™ are trade marks of Stratco (Australia) Pty Limited. © Copyright March 2021

How To.

