

CHAMBERLAIN®

# GRIFCO

## INDUSTRIAL SECTIONAL DOOR OPERATOR 415VAC 3-PHASE

• DOES NOT INCLUDE TRACK AND CHAIN •



TO SUIT MODEL NUMBERS: 58003P  
58001P & PC  
58015P & PC

### CONTENTS OF THIS BOOKLET

PARTS INCLUDED IN THIS KIT	Page 2
ASSEMBLY	Page 2
END SUPPORT BRACKET AND IDLER FITTING	Page 3
CARRIAGE FITTING	Page 4
ATTACHING THE TRACK TO THE MOUNTING PLATE	Page 4
CHAIN ATTACHMENT	Page 4
TENSIONING THE CHAIN	Page 5
INSTALLATION	Page 5
MOUNTING THE MOTOR UNIT	Page 6
CONTROL BOX INSTALLATION	Page 7
CARRIAGE TO DOOR CONNECTION	Page 7
LIMIT SWITCH CONNECTION AND SETTING	Page 8
SETTING THE SAFETY CUTOUT SWITCH	Page 9
WARRANTY/GUARANTEE	Page 10

Please read and understand instructions before attempting installation.

## PARTS INCLUDED WITH THE INDUSTRIAL SECTIONAL DOOR OPERATOR

DESCRIPTION	PART NUMBER
INDUSTRIAL SECTIONAL DOOR OPERATOR	58003P, 58001P & PC, 58015P & PC
CARRIAGE	PAN CAR
PUSH ARM	PAN PA
TRACK SUPPORT BRACKETS AND IDLER	PAN IDL

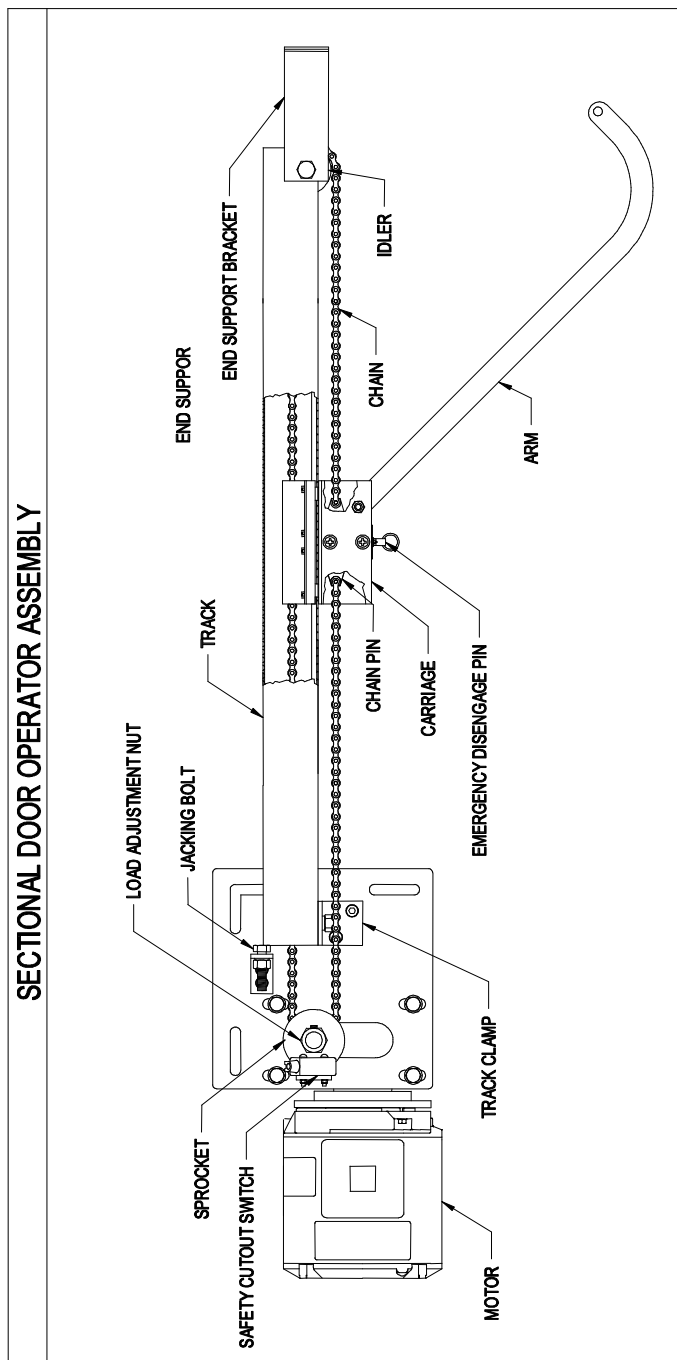
### NOTE:

Track and chain are not included. Order these in lengths to suit the installation.

## ASSEMBLY

Components must be assembled prior to installation.

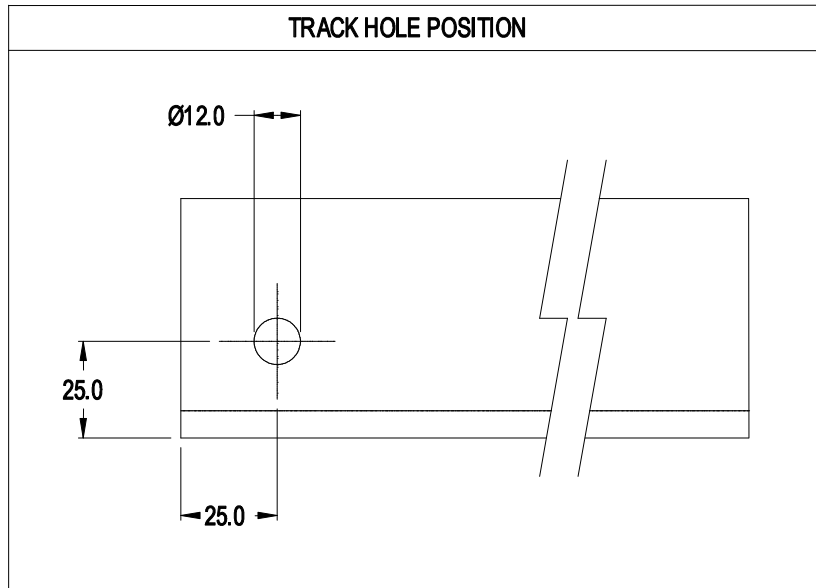
### END SUPPORT BRACKET AND IDLER FITTING



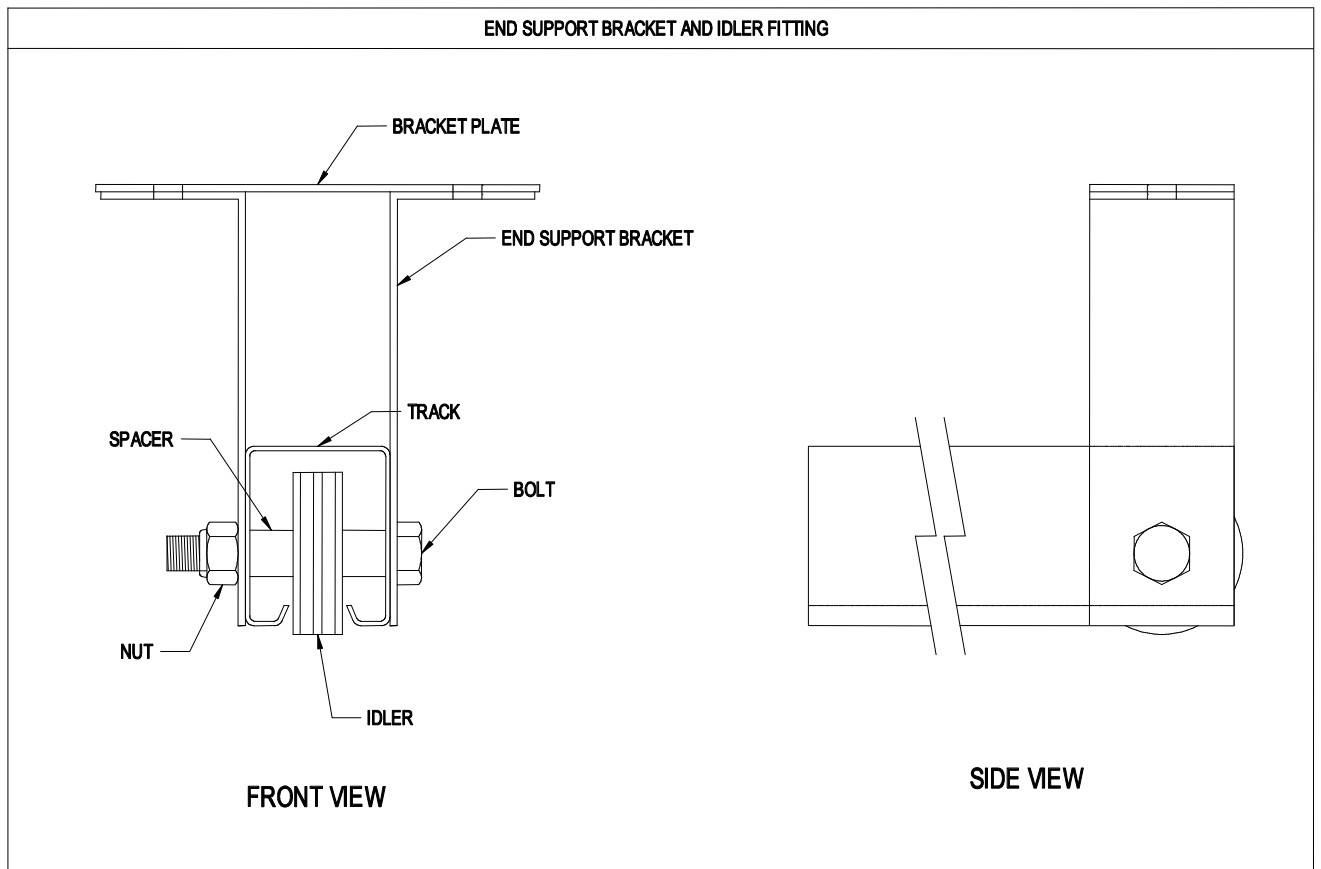
MODEL NUMBERS: 58003P, 58001P & PC, 58015P & PC INSTALLATION / USER MANUAL

**Please read and understand instructions before attempting installation.**

A hole must be drilled in one end of the track for the fitting of the end bracket and idler. Drill the hole in the track as below:



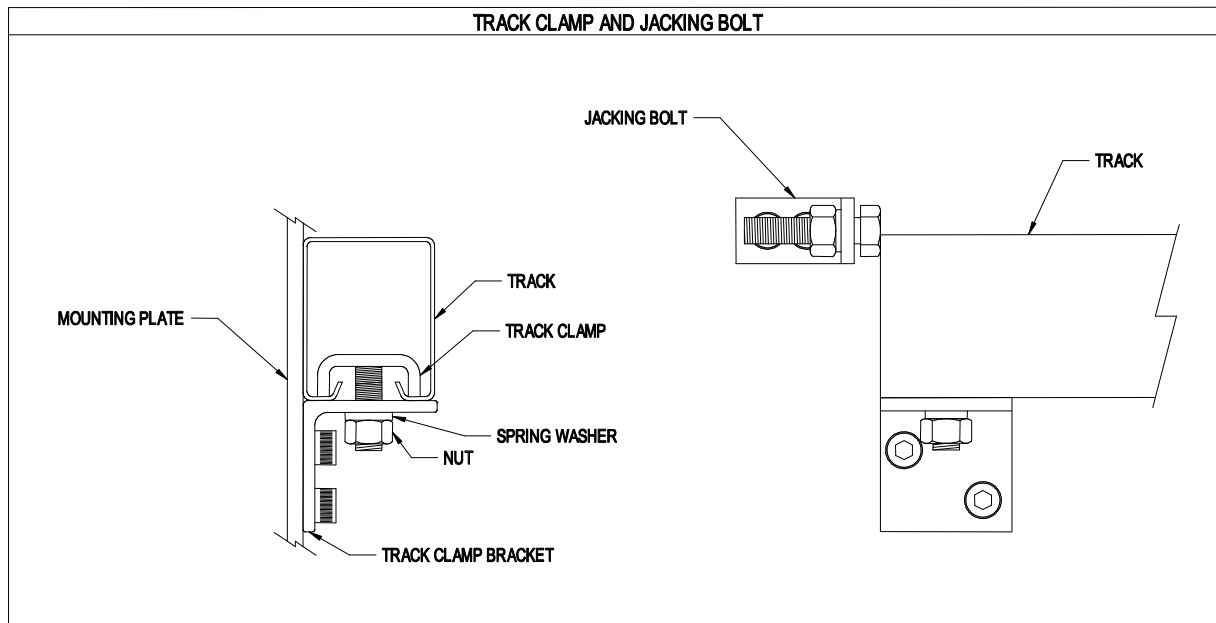
Bolt the end support bracket and idler assembly to the track as below. Use the spacers to centralise the wheel between the sides of the track. Do not fully tighten the bracket, as fitting the assembly to the ceiling is easier when the track can swing on the bracket.



## CARRIAGE FITTING

The carriage runs on white skid pads along the lipped edges of the track. Fit the carriage to the track so that the arm is towards the idler end of the track.

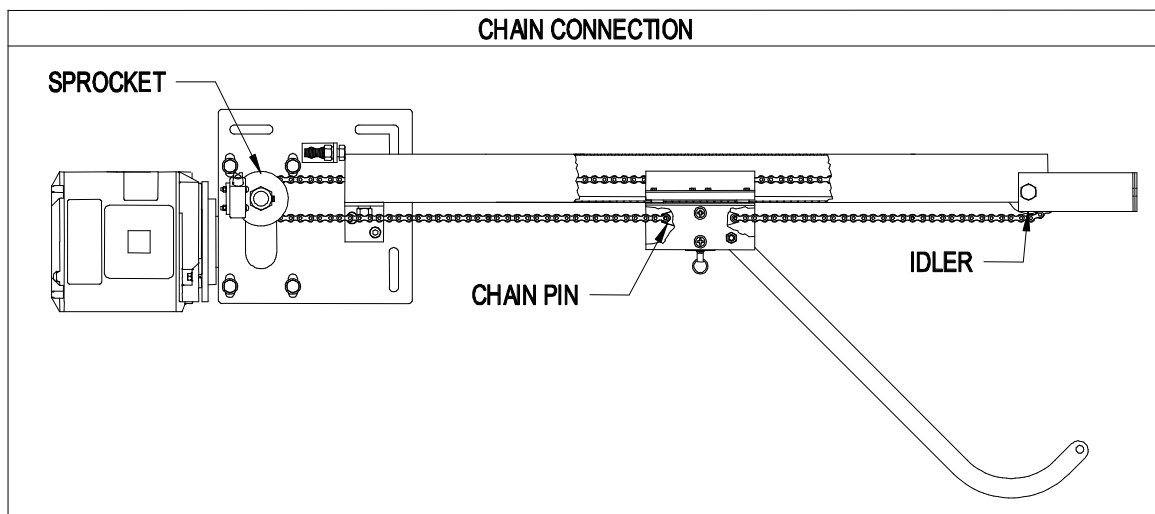
## ATTACHING THE TRACK TO THE MOUNTING PLATE



Ensure that the jacking bolt is fully tightened into its bracket. Push the non-idler end of the track over the track clamp which fits over the internal lips of the track. Push the track over the clamp until its edge touches the head of the jacking bolt as below.

## CHAIN ATTACHMENT

Slide the carriage close to the centre of the track. Join one end of the chain to the idler end of the carriage chain pin using the conlink provided. Pass the chain through the assembly as below. The loose end of the chain must be attached to the other end of the chain pin using the other conlink provided. When attached, the chain should be taut. To accomplish this the chain must be cut so that the chain is as short as you can get it while still being able to attach the chain to the chain pin by hand.

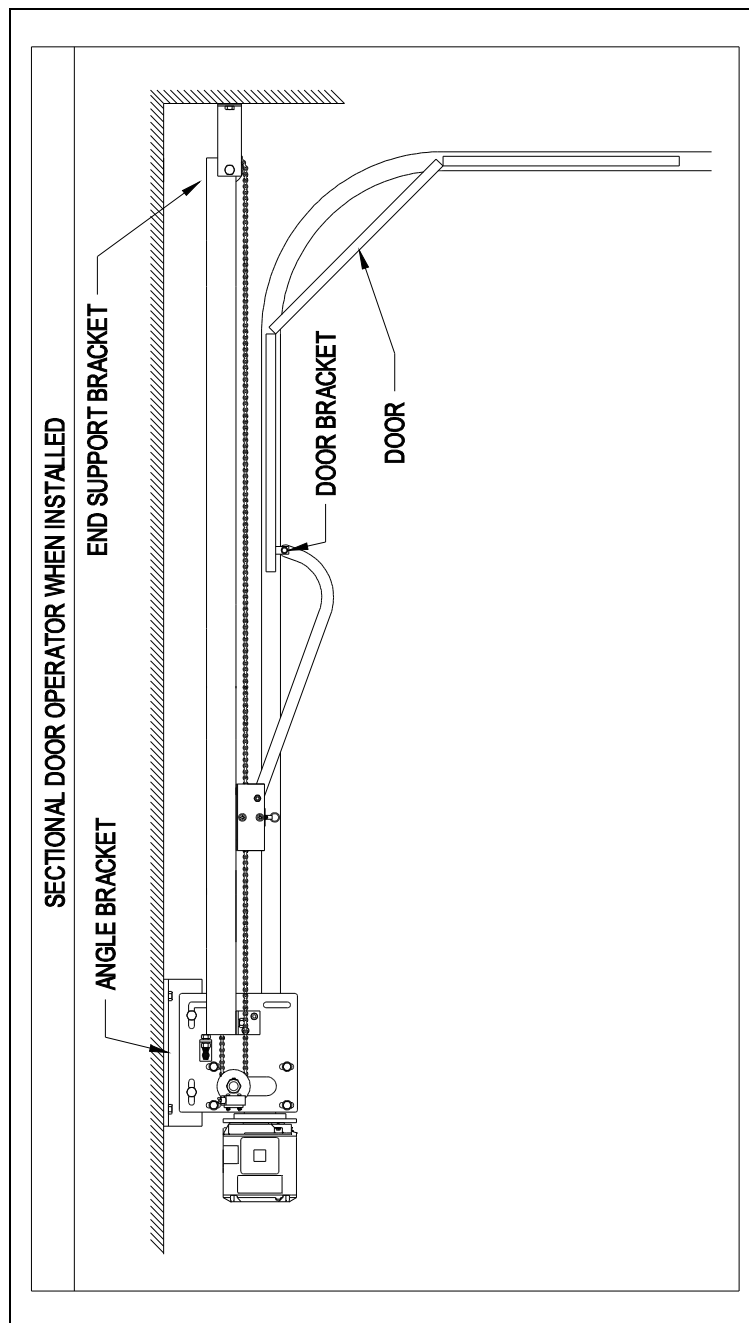


## TENSIONING THE CHAIN

If the chain is still too loose even when it has been cut as short as possible, it can be tensioned by loosening the track clamp and backing off the Jacking Bolt using a spanner. This will push the track away from the mounting plate and increase tension in the chain. When chain tension is sufficient, tighten the track clamp.

## INSTALLATION

The assembly is designed to be fitted parallel to and below the ceiling, and above the door. Upon installation the idler end of the assembly should be as close as possible to being above the centre of the door width as below.



## MOUNTING THE MOTOR UNIT

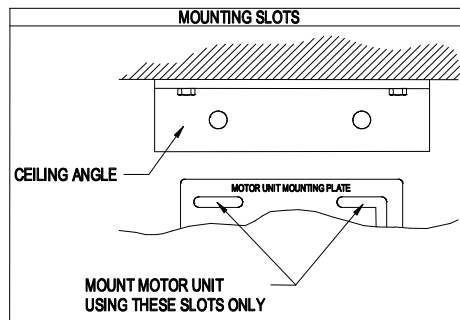
**\*Important-** To avoid transmitting vibration through a building, you must secure the motor unit using only the horizontal slots along the top of the mounting plate. (see diagram below)

**Do not use vertically mounted brackets or bracing on the motor unit or track.**

Angle iron or similar is needed for mounting the motor unit, prepare holes in these to suit the slots on the motor unit plate.

Prepare holes in the appropriate ceiling/mounting area to be used for mounting of the angle iron and end support bracket. Fit the angle iron to the ceiling. (use M10x75 dynabolts for mounting)

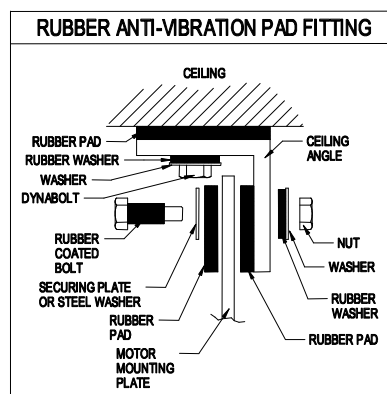
Raise the assembly and bolt the end support bracket to the ceiling, then hinge the motor unit upwards and bolt it to the angle iron. (see below). Tighten the end support bracket/idler bolt.



When fitting the motor unit to the angle bracket, you should avoid over tightening the mounting bolts. Nyloc nuts should be tightened only slightly firm, enough to remove any play or slop. It is recommended that a Loctite thread adhesive be used. If vibration is still evident, loosen the mounting bolts.

The fitting of rubber to dampen vibration is highly recommended and will be effective if fitted properly.

**Grifco anti-vibration brackets should be used in this situation**, however you may install rubber pads on either side of the mounting plate eliminating all metal to metal contact with the angle bracket. High durability rubber is necessary and large washers must be used on both bolts. Bolts that do not touch either plate will also decrease vibration levels.



**DO NOT SECURE THE MOTOR UNTIL CHAIN TENSION IS CORRECT**

## **CONTROL BOX INSTALLATION**

The control box must be mounted in an appropriate position near the door. Refer to the instructions supplied with the control for installation details.

If a Grifco logic control is being used, the cutout switch mounted on the logic control enclosure should be connected to the photocell terminals.

## **CARRIAGE TO DOOR CONNECTION**

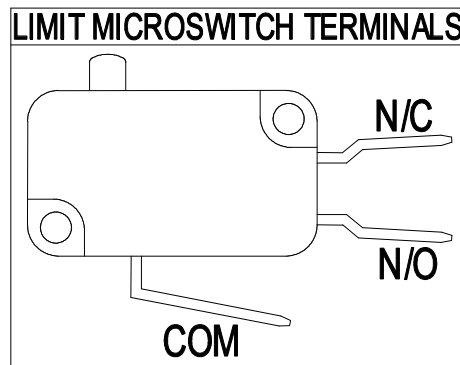
When operating the unit, avoid running the carriage to close to the ends of the track. The arm must be connected to the door with a 'U' shaped bracket; this must be fabricated if it is not already fitted. The arm should be attached to the bracket with a bolt and nyloc nut or similar (M10), allowing the arm to rotate freely.

The carriage has a quick release feature for manual door operation using the key ring.

## LIMIT SWITCH CONNECTION AND SETTING

### CONNECTION

The limit switches must be connected to the control gear being used via the NORMALLY CLOSED (N/C) and COMMON (COM) of the microswitch as shown below:



### SETTING THE LIMIT SWITCHES

The limit switch mechanism is a worm driven friction held adjustable cam system using two micro switches.

### LIMIT SETTING PROCEDURE

**WARNING: Limits are extremely sensitive, a small cam movement may correspond to a large amount of door travel**

*-ISOLATE MAINS BEFORE SETTING LIMITS*

*-AVOID CRAMMING WIRES INTO LIMIT ENCLOSURE AS IT MAY AFFECT CAM MOVEMENT*

Follow the steps below: (use supplied adjustment tool)

- Manually position the door in the centre of the opening.
- Position one cam to depress a switch and the other so that it is well clear of the switch. Note which switch it is that you have depressed.

**•For controls with up and down controls:**

*~Supply power and activate control in the upward direction.*

*~If the shutter travels up then the limit switch noted above is the bottom limit, if the door doesn't move, it is the top limit.*

**•For single button controls:**

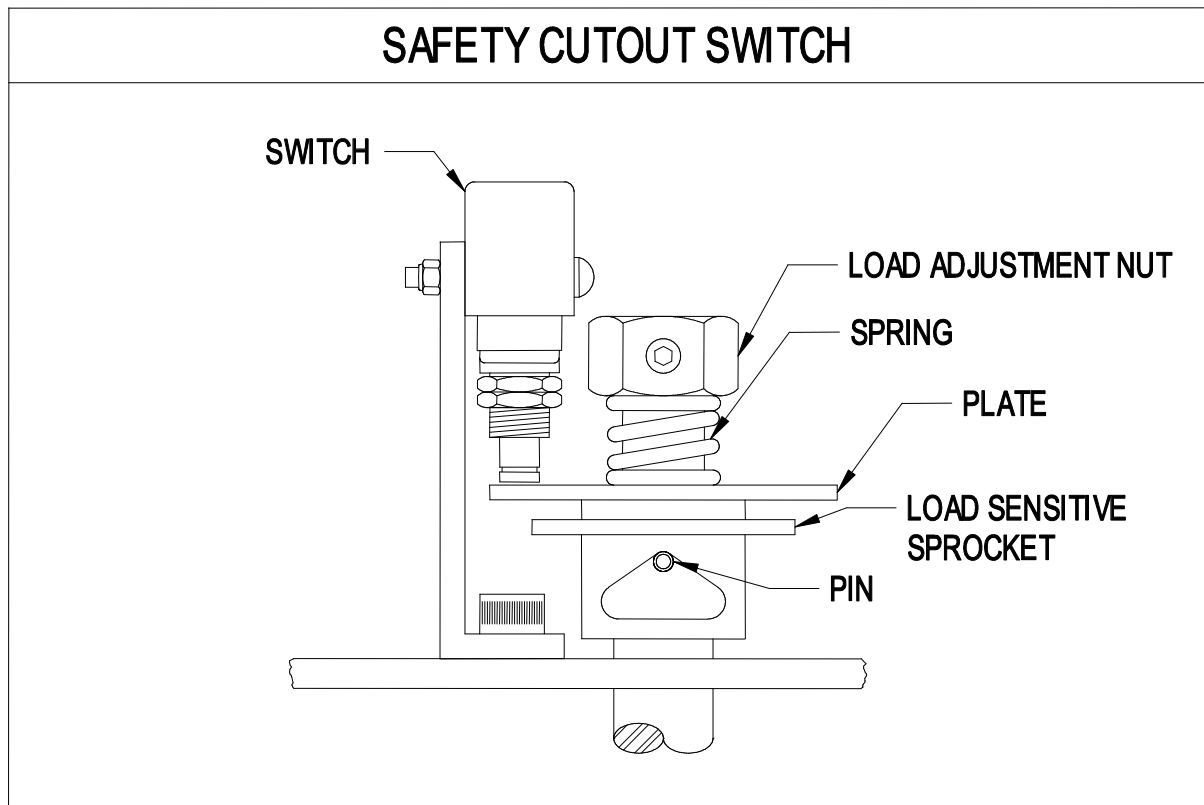
*~Supply power and push the button.*

*~If the shutter moves up, the switch noted above is the bottom limit; if it moves down then it is the top limit.*

- Isolate power and adjust the limit cams to depress the switches when the door reaches its open and closed positions.
- Test the cam positioning and adjust if necessary.



## SETTING THE SAFETY CUTOUT SWITCH



The Safety Cutout Switch is designed to protect the door against severe collision during operation. If the door is obstructed the unit will keep trying to move the door until it reaches a torque set by you. At this torque, the Load Sensitive Sprocket will depress the Switch.

The load at which the Switch is depressed is set using the Load Adjustment Nut. The load should be set so that the door will not be damaged if it encounters an obstruction. The load should not be set so low that the Switch depresses during normal door operation.

It is recommended that the Safety Cutout switch be connected to the Photo-Cell terminals on the logic control board. This will allow the door to auto-open after an obstruction and allow the obstruction to clear.

**CHAMBERLAIN 24 MONTH LIMITED WARRANTY**

(Excluding electric motors)

Chamberlain Australia Pty Limited / Chamberlain New Zealand Limited (**Seller**) warrants to the original purchaser of the Grifco product (**Unit**) that it is free from defects in material and/or workmanship for a period of 24 months from the date of first purchase from the Seller.

If, during the limited warranty period, the Unit fails due to defects in materials or workmanship Chamberlain will, provided the defective part or Unit is returned freight and insurance prepaid and well packaged to the nearest Chamberlain office, undertake to repair or, at its option, replace any defective part or Unit and return it to the Buyer at no cost. Repairs and replacement parts are warranted for the remaining portion of the original warranty period.

**Limited warranty on electric motors - 12 months**

In keeping with the manufacturer's warranty, Chamberlain offer a 12 month warranty on all electric motors from the date of purchase. We will furnish a replacement motor free of charge, if it is found to be defective. Labour costs may apply.

Where the Unit has been installed by an authorised installer, Chamberlain will furnish replacement parts free of charge through the authorised installer. Warranty is based on the electric motor/operator being used in conjunction with controls supplied (or other controls authorised in writing prior to installation) by Chamberlain.

**In-warranty service**

During the warranty period, if the product appears as though it may be defective, call our technical department before removal of the unit. A Chamberlain technician will diagnose the problem and promptly supply you with the parts for "do-it-yourself" repairs, or provide you with shipping instructions for a factory repair or replacement.

If our service centre determines that a warranty claim has been made in respect of a failure or defect arising under or out of any exclusion set out below, we may charge you a fee to repair and/or return the unit to you.

**Exclusions**

This warranty does not cover any failure of the Unit due to:

1. non-compliance with the instructions regarding installation, operation, maintenance and testing of the Unit or of any product with which the Unit is used.
2. any attempt to repair, dismantle, reinstall or move the Product to another location once the Product is installed by any person other than an authorised installer.
3. tampering, neglect, abuse, wear and tear, accident, electrical storm (force majeure), excessive use or conditions other than normal commercial use.

This warranty does not cover any problems with, or relating to, the commercial door or door hardware, including but not limited to the door slats, door springs, door drum, door alignment or hinges, any problems caused by electrical faults or labour charges for reinstalling a repaired or replaced Unit.

**Liability – Australia only**

Under no circumstances shall the Seller be liable for consequential, incidental or special damages arising in connection with the use, or inability to use, the Unit. In no event shall the Seller's liability for damages or injury arising from breach of law or contract or for negligence, exceed the cost of repairing or replacing the Unit or refunding the purchase price of the Unit.

Under Division 2 Part V of the *Trade Practices Act, 1974*, certain warranties and conditions (**Implied Terms**) are implied into contracts for the supply of goods or services if the goods or services are of a kind ordinarily acquired for personal, domestic or household use or consumption. Liability for breach of those Implied Terms cannot be excluded or limited and the limitations and exclusions above do not apply to the Implied Terms.

Except for the Implied Terms and the warranties set out above, the Seller excludes all warranties and conditions implied by statute, at law, in fact or otherwise.

**Liability – New Zealand only**

Except as set out in the *Fair Trading Act 1986* and the *Consumer Guarantees Act 1993*:

- (a) all other guarantees, warranties and representations in relation to the Unit or its supply are excluded to the extent that the Seller can lawfully exclude them; and
- (b) under no circumstances shall the Seller be liable for consequential, incidental or special damages arising in connection with the use, or inability to use, the Unit, other than those which were reasonably foreseeable as liable to result from the failure.

Chamberlain reserves the right to change the design and specification without prior notification. Some features or accessories may not be available in certain markets or areas.

**Australia**

Phone 02 4323 3877  
Phone toll free 1800 GRIFCO  
Or 1800 474 326  
Fax 02 4323 3882

**New Zealand**

Phone 09 415 4393  
Phone toll free 0800 653 667  
Fax 09 415 4394