

REMOTE PRO

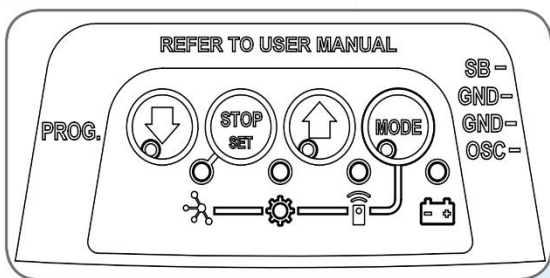
PROGRAMMING INSTRUCTIONS



CODING TO AN ATA GARAGE MOTOR

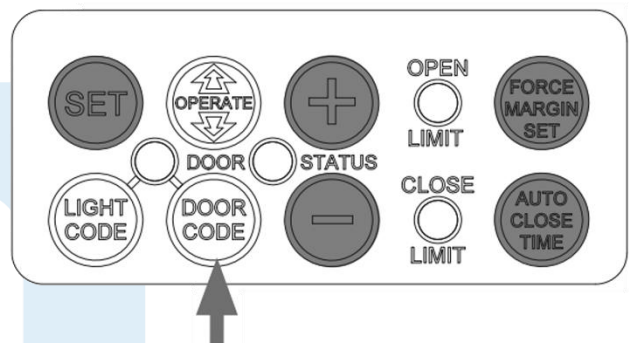
Some garage motors have a plastic cover over the buttons. If yours does, remove it. Locate either the “MODE” or “DOOR CODE” button on the motor, as shown below. Follow the instructions based on which button your motor has.

Option 1



OR

Option 2



OPTION 1: MOTORS WITH A “MODE” BUTTON

1. Press and release the “MODE” button on the motor repeatedly until the LED on the transmitter lights up
2. Press and hold the blue down arrow button on the motor until Step 5
3. On the transmitter, press and hold button 1 for 2 seconds
4. Press and hold button 1 again for 2 seconds
5. Release the blue down arrow button on the motor
6. Press and release the “MODE” button on the motor

OPTION 2: MOTORS WITH A “DOOR CODE” BUTTON

1. Press and hold the “DOOR CODE” button on the motor until Step 4
2. Press and hold button 1 on the remote for 2 seconds
3. Press and hold button 1 again for 2 seconds
4. Release the “DOOR CODE” button on the motor

WARNING

This product may contain a coin/button cell battery. Keep product and batteries away from children. A battery can cause severe or fatal injuries in 2 hours or less if swallowed or placed inside any part of the body. Seek immediate medical attention if it is suspected that a coin/button cell battery has been swallowed or placed inside of any part of the body.

