

REMOTE PRO

PROGRAMMING INSTRUCTIONS





B&D TRITRAN COMPATIBLE

SWITCHING THE REMOTE FREQUENCY

1. Press and hold both buttons 1 and 2 on the new remote at the exact same time. The red light on the remote will illuminate and remain solid.

Continue to hold buttons 1 & 2 on the remote until the red LED light on the new remote turns off. If the light DOES NOT illuminate, please repeat this step with buttons 3 and 4.

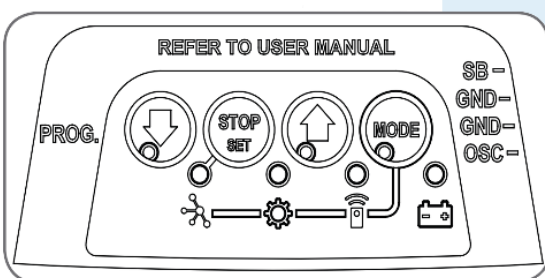
2. To confirm the remote has been switched to the correct frequency, press and hold button number 1 on the remote and look at the motor control panel.

You should see either the 'Code Set'  light or the transmitter light . If you see the light on your motor flashing and communicating with the remote, you are ready to program your remote.

PROGRAMMING THE REMOTE

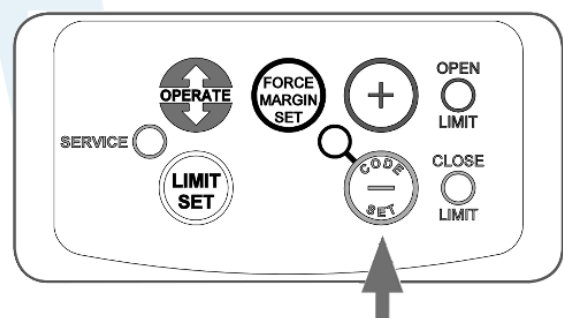
Some garage motors have a plastic cover over the buttons. If yours does, remove it. Locate either the "MODE" or "CODE SET" button on the motor, as shown below. Follow the instructions on the next page based on which button your motor has.

Option 1



OR

Option 2



WARNING

This product may contain a coin/button cell battery. Keep product and batteries away from children. A battery can cause severe or fatal injuries in 2 hours or less if swallowed or placed inside any part of the body. Seek immediate medical attention if it is suspected that a coin/button cell battery has been swallowed or placed inside of any part of the body.



REMOTE PRO

PROGRAMMING INSTRUCTIONS



OPTION 1: Motors with a “MODE” button

1. Press and release the “MODE” button on the motor repeatedly until the LED on the transmitter lights up
2. Press and hold the blue down arrow button on the motor until Step 5
3. On the transmitter, press and hold button 1 for 2 seconds
4. Press and hold button 1 again for 2 seconds
5. Release the blue down arrow button on the motor
6. Press and release the “MODE” button on the motor

OPTION 2: Motors with a “CODE SET” button

1. Press and release the “CODE SET” button on the motor
2. Press and hold button 1 on the remote for 2 seconds
3. Press and hold button 1 again for 2 seconds
4. Test your remote

WARNING

This product may contain a coin/button cell battery. Keep product and batteries away from children. A battery can cause severe or fatal injuries in 2 hours or less if swallowed or placed inside any part of the body. Seek immediate medical attention if it is suspected that a coin/button cell battery has been swallowed or placed inside of any part of the body.

