

# REMOTE PRO

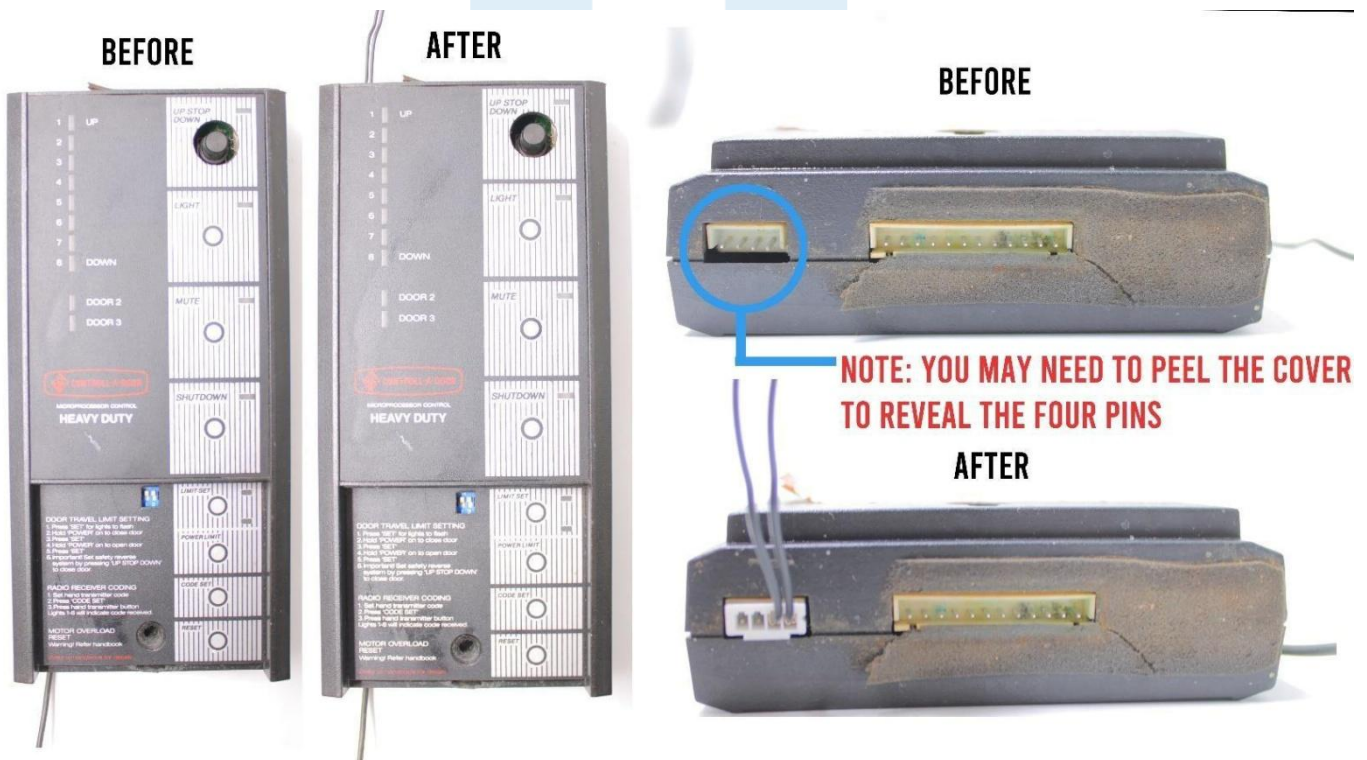
## PROGRAMMING INSTRUCTIONS



### B&D MPC1

#### INSTALLING RECEIVER TO B&D MPC1 MOTORS

- 1. TURN OFF POWER AND UNPLUG THE POWER POINT OF THE MOTOR – DO NOT PROCEED UNLESS THIS STEP IS COMPLETE**
2. Plug in the white plug of the receiver with the two black cables into the top left of the MPC1 wall control unit as shown in the diagram below. If you do not see the white four pins you will need to peel away the black sticker covering the plug.
3. Plug the black AC adapter connect to the receiver into a power point. Plug back in the power to the motor and switch the motor and the adapter on.
4. The remotes have been pre-programmed to button number 1. Press 1 to test the door.



#### WARNING

This product may contain a coin/button cell battery. Keep product and batteries away from children. A battery can cause severe or fatal injuries in 2 hours or less if swallowed or placed inside any part of the body. Seek immediate medical attention if it is suspected that a coin/button cell battery has been swallowed or placed inside of any part of the body.



# REMOTE PRO

## PROGRAMMING INSTRUCTIONS



### CODING NEW REMOTES

Please Note: Your original remotes will continue to work and the new remote have already been programmed

1. Press and immediately release the learn 1 button inside the receiver
2. Press and hold any button on your new remote until the LED flashes on the receiver begins to flash
3. The remote is now coded, please test the remote to ensure it can operate the motor.
4. If you have more than one new remote, please repeat steps 1-3.



#### WARNING

This product may contain a coin/button cell battery. Keep product and batteries away from children. A battery can cause severe or fatal injuries in 2 hours or less if swallowed or placed inside any part of the body. Seek immediate medical attention if it is suspected that a coin/button cell battery has been swallowed or placed inside of any part of the body.

