

4-CHANNEL TRANSMITTER

Wireless Keyring Transmitter compatible with Security+ and Security +2.0

1. Introduction

This transmitter is for use with Grifco commercial door operators with Security+ 2.0 radio-on-board or legacy Security+ systems. The door opener activates on button press.

LED Indicator

- Green LED indicates when transmitter is in operation (useful battery check)
- Used when programming (learning) transmitters to operators

Surrounding Metal Edge

- Extra durability & styling
- Protects the edge of the transmitter against potential damage due to dropping

Security +2.0 / Security+

- Transmitter can be used with operators using Security +2.0 or Security+ codes
- Any button can be programmed to operate any operator with either code

4 Buttons

- Configure each button to operate any current operator in the Grifco, Merlin or Chamberlain DIY portfolio
- Buttons have raised dots to indicate door number
- Buttons can be configured to open multiple doors or open / close an individual door

Keyring

- Keyring included

Device Naming Panel

- White space to name the transmitter
- Mark the apartment number, transmitter reference code or name etc.



WARNING

To prevent possible **SERIOUS INJURY** or **DEATH**:

- NEVER allow small children near batteries.
- If battery is swallowed immediately notify doctor.

To reduce risk of fire, explosion or chemical burn:

- Replace **ONLY** with CR2032 coin batteries.
- DO NOT recharge, disassemble or heat above 100°C or incinerate.

2. Programming via the Grifco C10A (Security +2.0) Wall Control

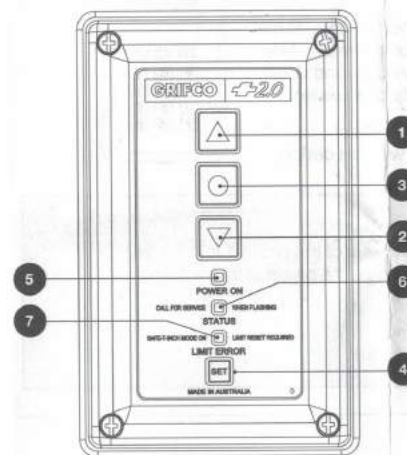
eDrive +2.0 operators are supplied with a **RADIO LOCK** bridge on the main circuit board. This lock will have to be removed before programming any wireless transmitters. The **RADIO LOCK** can be replaced after programming is complete. See the eDrive +2.0 manual for more information. To program the wireless transmitter perform the following steps:

1. Press and hold the **SET** button on the GRIFCO front panel, then;
2. While holding the **SET** button, press the **STOP** button **5 times** (the green status light will light then continue flashing, indicating learn mode)
3. Let go of the **SET** button
4. Press a button on the wireless transmitter
5. The orange **LIMIT ERROR** light will flash to acknowledge the learned device
6. Press another button until all buttons and/or devices are learned
7. Press **STOP** button on the GRIFCO front panel to exit learn mode

Grifco C10A (Security +2.0) Wall Control

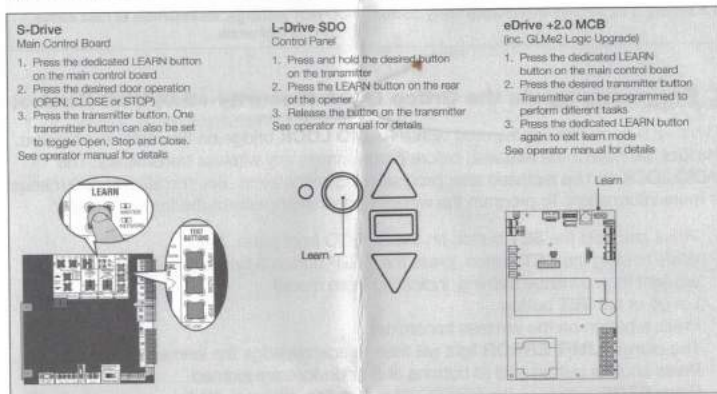
1. **UP** - Moves the door upwards
2. **DOWN** - Moves the door downwards
3. **STOP** - Stops the door
4. **SET** - SET button
5. **POWER ON** - Shows when the unit is mains powered
6. **STATUS** - Shows the status of the unit
7. **LIMIT ERROR** - When lit indicates limits are not set

The wireless transmitter can be used to **TOGGLE** the action of the door between close / stop / open if an obstruction detection device is installed, or stop / open only if no obstruction detection device is installed.



3. Programming other Security +2.0 Systems

The transmitter is preset for use with Grifco Security +2.0 systems (for example eDrive +2.0 Commercial Door Openers). Refer to the **WIRELESS PROGRAMMING** section in your operator manual for detailed instructions on programming.



4. Programming STAR1000EVO

The STAR1000EVO transmitter management device has the ability to learn a combination of remote control transmitters and keyless entries up to 1,000 devices. Audible and visual warnings occur when the receiver capacity is exceeded.

View the STAR1000EVO user manual for details of programming and managing transmitters with this device.



One Year Limited Warranty

Chamberlain warrants to the original purchaser of this product that it is free from defect in materials and/or workmanship for a period of 1 year from the date of purchase.

Note: Batteries are not covered by warranty

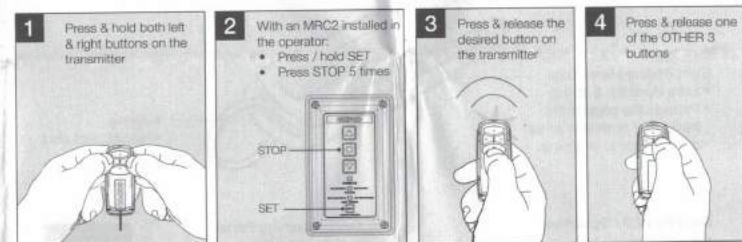
5. Programming Older (Legacy or Security+) Systems

To program the transmitter for legacy Security+ systems (for example original eDrive, Maestro with MRC receiver card), the transmitter must first be placed into **TRANSMITTER PROGRAMMING** mode.

1. Enter **TRANSMITTER PROGRAMMING** mode on the transmitter by pressing & holding the left & right buttons simultaneously for 5 seconds (fig 1). Release when the transmitter LED stays ON continuously
2. Press & release the **LEARN** button on the operator (fig 2). Within 30 seconds, the transmitter can now be programmed
3. Press & release the desired button on the transmitter (fig 3). If the operator light flashes, the code has been learned & step 4 can be performed. If not, press the selected button again until the operator indicates the code has been learned.
4. Press & release any one of the **OTHER 3** buttons of the transmitter (fig 4). This **LOCKS** the code into the button selected in step 3 & the transmitter LED turns OFF.

The code has been learned & the transmitter will operate the door on the next press.

NOTE: In the event you need to return a button to Security +2.0 code, repeat the programming sequence outlined above.



6. Replacing Batteries

The lithium battery should produce power for up to 5 years. If battery power is low the LEDs will not flash when a button is pressed.

