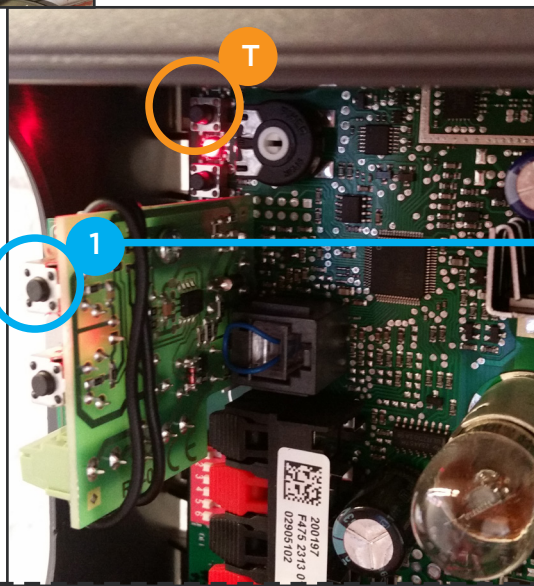


GA  
103



- Suitable for garages with up to 2 spaces
- Pulling force 600 N
- Door sizes up to 12m<sup>2</sup>
- Opening speed max. 135 mm/sec.
- Plus optional battery back up

The GA103 garage door operator is loaded with technical innovations. The second opening height is a standard programmable feature, and the opening power is 600 N. Owners can also expect the highest level of security and user safety, along with a 2 Year warranty. All units are TUV tested and exceed or surpass the most stringent industry requirements for reliability and performance.



## HOW TO PROGRAM A REMOTE



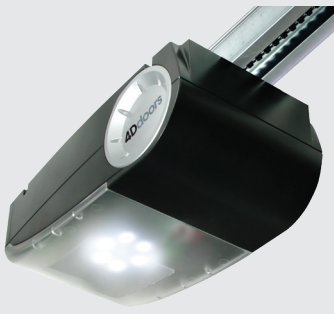
- 1 Press and hold button 1
- 2 Press the button on the remote you want to program

Let go (release) both buttons

## T HOW TO SET LIMITS AND FORCE

- A. Make sure the door is connected to the motor
- B. Turn the power off to the motor
- C. Press and hold the T button
- D. Turn power supply back on while still pressing the T button
- E. Keep holding T button 5 seconds minimum
- F. Release T button
- G. Press T button momentarily and release
- H. Door will perform 4 - 5 test operations automatically
- I. Door now should work correctly

**4Ddoors**  
Just Got European

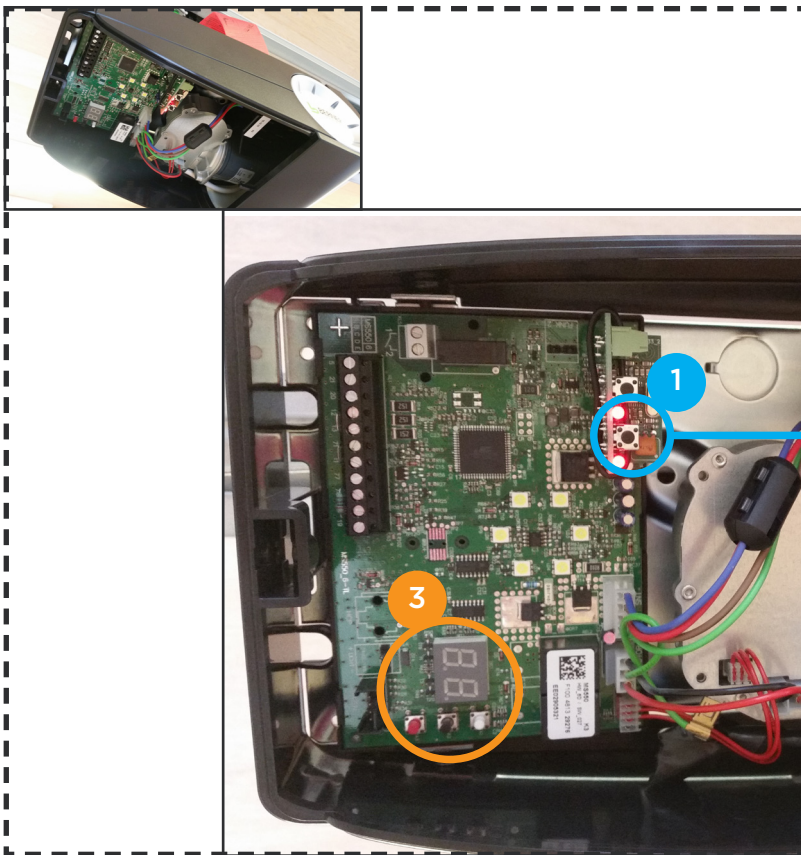


GA  
203

- Suitable for garages with up to 8 spaces
- Pulling force 750 N
- Door sizes up to 15m<sup>2</sup>
- Opening speed max. 220 mm/sec.
- 0.5 W in standby mode

GA  
403

- Suitable for garages with up to 30 spaces
- Pulling force 1000 N
- Door sizes up to 20m<sup>2</sup>
- Opening speed max. 220 mm/sec.
- 0.5 W in standby mode



## HOW TO PROGRAM A REMOTE

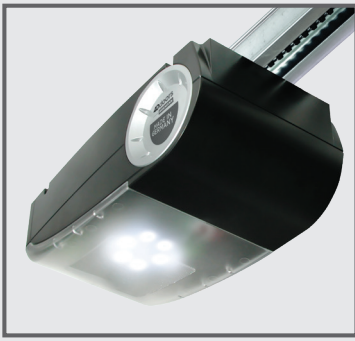


- 1 Press and hold button 1
- 2 Press the button on the remote you want to program

Let go (release) both buttons

## 3 HOW TO SET LIMITS AND FORCE

- A. Make sure the door is connected to the motor
- B. Press and hold the black button for 10 seconds until you see an L on the display then release it
- C. Put the door in the open position using the white button (door open) and the red button (door close)
- D. Confirm open position by pressing the black button once
- E. Door will perform 4 - 5 test operations automatically
- F. Door now should work correctly



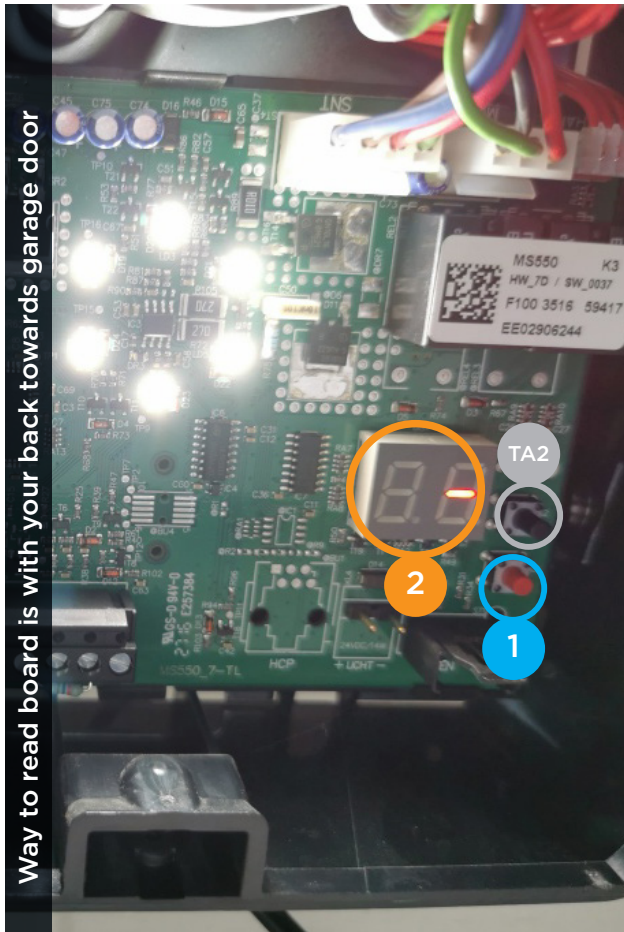
GA  
203

GA  
403

## Coding Instructions v3 (2 PIN receiver)



Art Series  
Handset



Way to read board is with your back towards garage door

### TO CODE NEW REMOTES YOU NEED TO DO THE FOLLOWING:

- 0 Open motor cover (lid).
- 1 Push the **RED** button on the circuit board **once**.
- 2 The little display will light up with a lower caps r and 1.
- 3 **Hold** down the button on the remote until LED lights on motor start going brighter.
- 4 Then **release** the button of the remote.
- 5 Your remote should be coded, press button to test.

### DELETE CODING

- 1 Push the **RED** button on the circuit board and hold for 10 seconds, a count down will start from 8 to 0, dE will appear on display when it finishes, please release the button.
- 2 Please test your remote

### TA2 HOW TO SET LIMITS AND FORCE

- A. Make sure the door is connected to the motor
- B. Press and hold the black button for 6 seconds until you see an L on the display then release it
- C. Put the door in the open position using the white button (door open) and the red button (door close)
- D. Confirm open position by pressing the black button once
- E. Door will perform 4 - 5 test operations automatically
- F. Door now should work correctly

### WARNING

To prevent possible SERIOUS INJURY or DEATH:  
 - Battery is hazardous: NEVER allow children near batteries.  
 - If battery is swallowed, immediately notify a doctor.

To reduce risk of fire, explosion or chemical burn:

- Replace ONLY with the same size and type battery  
 - DO NOT recharge, disassemble, heat above 100° C or incinerate  
 Battery will cause SEVERE or FATAL injuries in 2 hours or less if swallowed or placed inside any part of the body.

